

DOGS, IN, CROCHET
\$8,995 plus TTL. \$208
per month. WAC. Accent
Autos 2702 S. 14th st.
(325)692-1217

Trailers

★19' gooseneck dump;
14' dump; 5' platform with
ramp; heavy duty axles;
less than one year old.
\$6900 new. MAKE OF-
FER!
★16' Heavy duty land-
scaping trailer. Bulldog
hitch; drop foot jack; fold
down ramp gate. \$1200.
325-665-2483

Flat Bed Trailer.

16' New Floor, Lights
\$650 (325) 665-8791

Wells Cargo 20ft Box
Trailer. Hauls Cars,
Tools, Etc. Remote
Wynch, Nose Cone,
Rock Guard, Drop Rear
& Side Door, Ventil.
Lights, \$4,900.
325-518-8708

Well built, homemade,
4x8 utility trailer with
spare \$400
254-559-1587

Vans

1997 Chevy
Venture Ext.
7 Passenger
Navy Blue, Rear AC,
AM/FM/Cassette/CD,
Removable seats.
\$4,300 672-3982

'91 Dodge ¾
Ton Van
Runs Great! Would be a
great work vehicle.
\$1,150. 672-9001.

1983 Dodge
Van 1 Ton
Extended. Good work
van. Runs good. \$1,100/
OBO. 676-7905 or 721-
5582.

Craftsman Table Saw, Full Size Pool Table, Arm
Bats, Linens (Crocheted/Quilts), Computers, TV, What-nots,
Angel Stuff, Books, Envelopes, Sm Appl, Paintings, Pics,
Lamps, Mirrors. *Much More Coming - Nice Evening Sale!*
..... Calendar
2-7 House/Shop/Contents, 212 N Church, Winters, Tx - 10am
Open House: Sunday Afternoon, Feb. 1st, From 2-4
2-28 Trucking Shop Equip/Trucks, Odessa, Tx - 10am
..... Johnny Kincaid: TX6987
KINCAID AUCTION SERVICE HOUSE, Inc.
1905 Cottonwood, Ab, TX 676-4077 or (800) 446-5282
352665 <http://kashauction.homestead.com>

BANK FORCED AUCTION

6100 ACRES HUNTING & FISHING RANCH

January 21st, 2004

1:00 PM

Located near Abilene
at US 83, US 380, FM 2211
and FM 610, at Aspermont,
in Stonewall County, TX

Owner Must Sell

• Bid Your Price •

13 Ponds and Lakes
Wooded Area with world
class hunting of:

Pheasant, Dove, Deer, Bore.

Beautiful Plateau

Quick Possession

\$50,000 Down Sale Day,

Balance at Closing

For Helicopter Viewing Call

Local Broker:

Dusty Glass

Lic. #0506672

Texas Star Realtors

(254) 597-1180

Farm Equipment Selling To

The Highest Bidder

John Deere 4430 Dual

Chisel Plow

Offset Plow Color Red

John Deere Grain Drill 8300

Tandem Plow Green

White Breathing Plow 508

Flatbed Trailer

'92 Chevrolet Exterior Cab

Pickup 4X4

Call For Free Bidders Kit



1.800.968.4444

www.kruse.com

952769

John Danilson, Owner
7x Buyer's Premium
Auctioneer Dan V. Kruse
Lic. #AUC7NR000069595

Recreational Vehicles/
Travel Trailers

Recreational Vehicles/
Travel Trailers

Recreational Vehicles/
Travel Trailers



FIRST ANNUAL January 7th-10th 2004

BIGGEST RV SALE EVER!

HOT DOGS
POPCORN
SODAS

Prizes for the first 700 people
to complete the tour.

For additional information log on to: www.RVtourseale.com

REGISTER FOR A
CHANCE TO WIN
A NEW TRUCK

2003 FLEETWOOD FIESTA 26V
MOTORHOME

#BF312
Workhorse, Chassis,
Cruise Control, Air
Conditioning,
Awning
Was \$63,715
Now \$51,935



2004 FLEETWOOD
MALLARD 25J

Stock #8957
Microwave, Awning, Stabilizer Jacks,
Air Conditioner, AM/FM/CD
Stereo
MSRP- 16,359
Now \$12,995



2003 FLEETWOOD PROVIDENCE 39D
MOTORHOME

Diesel Pusher, Freightliner Chassis, Central
Vacuum System, Washer/Dryer. #BF540
Was \$186,613
Now \$149,749

5 to
Choose
From

PRE-OWNED CENTER

194 PAGE ARROW 30E

51K #86523A Was \$34,900

Now \$29,750

Now \$31,750

5.7L MPI EFI 335 HP en-
gine, sharkskin boat cov-
er for storage, Tige Ad-
justable Performance
System (TAPS), and tan-
dem axle trailer with
brakes. Buyer pays tax,
title, license and other re-
lated fees. This item has
a reserve minimum. Val-
ue \$38,900

Recreational Vehicles/ Travel Trailers

Tow Car 1998 Saturn
Wagon Standard STD
Tow adapter, Bra, T-bar,
Cable, Wiring
\$6,000
Call 325-692-7502

Absolutely the best
products, prices, and
service anywhere Check
out all our RV's 118 Ar-
nold, Jerry's Campers
698-0600

1968 Airstream Travel Trailer

Good condition, classic.
\$4,200 call 325-692-4662
John Thacker

For Sale
MC-B, Bus conversion
motorhome, many
options, \$39,500 OBO.
Consider trade in of late
model 5th wheel travel
trailer or John Deere
Tractor, 325-736-6706

Airstream & Citation Travel Trailers & Motorhomes 800-859-9205

1998 Motorhome for sale:
Pursuit by George Boy,
33'10" long, 7.4 liter
Chevrolet engine, 2 air
conditioners, sleeps 6.
Like new, 26,000 miles.
Kept under protection.
Call 325-728-3877

24' Dutchman
Pop-up, 24' A/C,
King/Queen, 1996
Model, \$3,500
698-8148

RV's-We Got 'Em

Motor Homes
Diesel Pushers
5th Wheels,
Travel Trailers
Tent Trailers
Big Country RV,
East I-20 Exit 294
677-1401

29' 2000 Sandpiper travel
trailer. Excellent condi-
tion, very clean, sleeps 8,
sofa slide out, bunks,
queen bed. \$12,500 325-
668-1919

sale date, upon pay-
ment of towing and
storage fees due. Fail-
ure of owners or lien-
holders to reclaim
their vehicles within
the time provided
shall be deemed a
waiver by them of all
rights, title, and inter-
est in the vehicle and
the consent to the
sale thereof.

Vehicles may be
viewed January 19th
through January 22th
between the hours of
1:00pm and 4:00pm
and January 23rd
from 9:00am until
noon. The Impound
will open at 8:00am
on the day of the auc-
tion. Vehicles may not
be viewed any other
times.

The Impound lot is lo-
cated off East Hwy 80
(Business 20), one
mile East of Judge
Ely, turn South on
Shaffner Rd. and East
at the intersection of
Sandy St.

The preferred method
of payment is cash.

We do not accept
credit cards, debit
cards or partial pay-
ment. WE NO LONG-

ER ACCEPT

CHECKS UNLESS

ACCOMPANIED BY

A BANK ISSUED

LETTER OF CREDIT.

Further information as
well as a list of vehi-
cles to be auctioned
will be made available
at the Impound during
the aforementioned
viewing hours.

L-352520

Found

Found: Beautiful friend.
Very talented and com-
passionate. Loves to
laugh. Lives for Jesus.
Goes by Sarah H.

Special Notices

Person

If anyone witne
accident by the
at N. 10th & N.
intersection on 12
8:15 a.m. bet
white blazer and
pickup, please
1543.

NEW TO A

Divorced 42 y
Hispanic male
ing someone to
special momen
and find a frie
partner from a
to 48. Race ut
tant, as long as
honest. I like t
the movies, t
them. I like to
Que and tak
walks at the
will travel to su
ing areas.

Call Ce

325-214-01

or Wri

?? P. O. Box

Coleman, TX

76834

L-35160

DID YOU WIT

A CAR ACCI

That occurred

afternoon of 11

on S. 14th Ne

Abilene Wor

Club where the

of a pickup car

attached and

another vehicle

please call Cris

673-7141

Special No

PLACING AN A

To Place An Ad

In the Abilene Reporter-News Classif

Call, E-mail, Visit Our Web Site,

Come In, Fax, or Mail

Call in an ad at 795-2020 or 1-866-604

E-mail to classifieds@reporternews.com

place an ad on the Internet,

www.reporternews.com. Place your ad

son by coming to 101 Cypress betwee

a.m. and 5:00 p.m. Monday through Frida

can be mailed to P.O. Box 30, Abilene

79604. Paid ads may be placed 24 hours

7 days a week.

Classified Line Ad Deadlines

Ad Appearing

Monday

Tuesday

Wednesday

Thursday

Friday

Saturday

Sunday

Call Before

Friday, 5:00 p.m.

Monday, 3:00 p.m.

Tuesday, 3:00 p.m.

Wednesday, 3:00

Thursday, 3:00 p

Friday, 3:00 p.m.

Friday, 5:00 p.m.

Call for display ad deadlines.

25¢ A Day Classifieds 10 Words for 30 Days

25¢ for each additional word. Individual
party, non-business advertising only. Do
apply to commercial auto, rentals, comm
businesses, real estate or employ
Customer may cancel ad at any time. R
non-refundable.

REAL ESTATE AUCTION

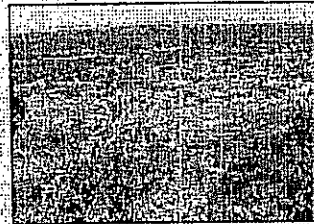
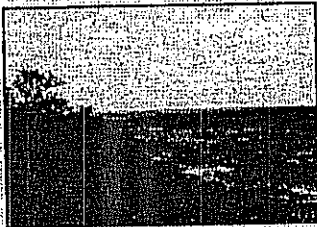
Prime Hunting Lands • 6100 Acres

Near Abilene In Stonewall County, Texas

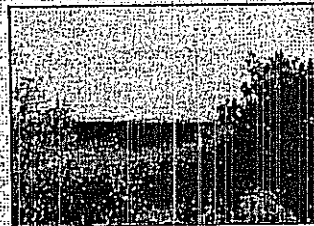
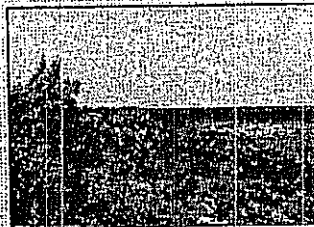
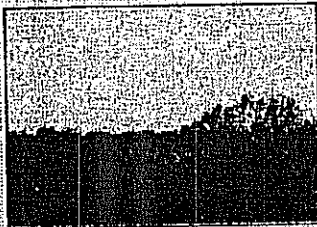
January 21st, 2004 • 1:00 PM

• IMPORTANT FACTS •

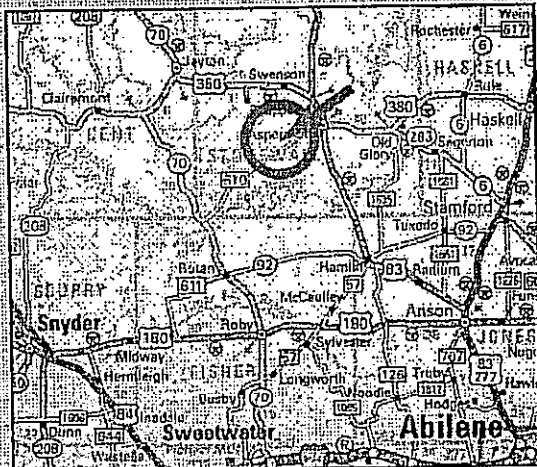
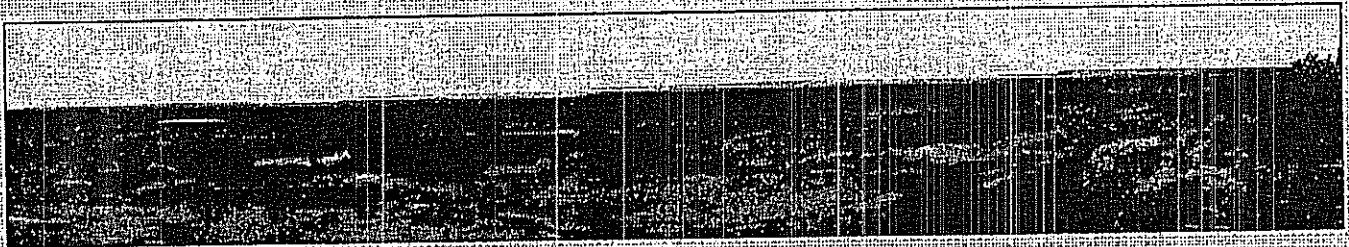
The ranch has good water over all with more than 20 stock tanks, eight of which are permanent allowing wildlife access to open water year round. The water flow is very diverse with as many as 14 different species of duck can be found in one day of hunting. Fishing in the permanent tanks is fantastic. There are several tanks that offer a catch with every cast, including large mouth bass and sun perch. The wildlife on the ranch includes white-tailed deer, wild hogs and even an occasional mountain lion. The location of the ranch is ideal for many situations. The airport, medical facility, food and lodging are all close by. This is a top-notch ranch that is really special and must be sold.



A Great Texas Ranch • Your Personal Reserve • Beautiful Lakes



Bid Your Price Sale Day • Call For Free Bidder's Kit • A Rare Opportunity



Located Near Abilene at US 83, US 380, FM 2211 and FM 610, at Aspermont in Stonewall County, TX

Owner
John Denison

For Helicopter Viewing Call Local Broker
Dusty Glass, Lic. #0506672

Texas Star Realtors

(254) 597-1180

For Auction Information Contact

Kruse International

800.968.4444

Ask For:

Jeff Doner • Dean V. Kruse



BAS 0007

BANK FORCED AUCTION

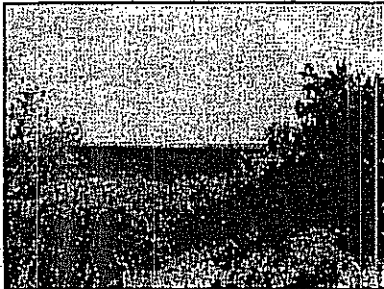
Must Sell to Avoid Foreclosure
Near Abilene in Stonewall County, Texas

6100 Acres • Bid Your Price Sale Day

Wednesday, January 21, at 1:00 PM

FIRST CLASS
U.S. POSTAGE
PAID
AUBURN, IN
PERMIT NO. 14

Change Service Requested



INTERNATIONAL

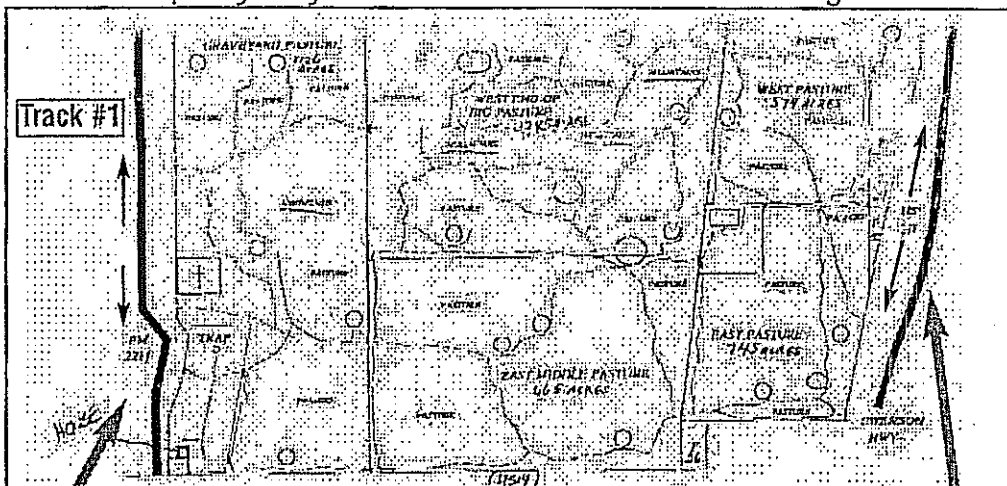
Selling Farm Equipment

See List Inside

Auction Held on Site

5540 County Road 11-A • Auburn IN, 46706 • 800.968.4444 • www.kruse.com

Property Layout • All Three Tracks Sold Together



Located in Aspermont, Texas, this unique property has been well known for its wildlife, beauty and its outstanding location. Lookoff points from mountains tops, provide a tremendous view of the entire ranch as well as stock tanks and an excellent view overlooking Aspermont. The property has private roads throughout for owner privacy. This is an above average ranch, very unique and offered for sale for the first time in 85 to 90 years, known as a hunter's dream. The land has been evaluated by two wildlife biologist. They were both amazed with results. various wildlife inhabit the property, quail, dove, turkey, water fowl, deer wild hogs, bobcats, largemouth bass, perch, catfish.

**Farm Equipment
Selling To The
Highest Bidder**

John Deere 4430 Dual
Chisel Plow
Offset Plow Color Red
John Deere Grain Drill 8300
Tandem Plow Green
White Breaking Plow 508 5 Row
Flatbed Trailer
1992 Chevrolet Ext Cab Pickup 4x4

BAS 0008